



Philips
LCD monitor with
PowerSensor

B Line

32 (31.5"/80 cm diag.)
3840 x 2160 (4K UHD)

328B1

Ultra-clear vision to get more done

Get your best work done with this Philips monitor. UltraClear 4K UHD gives the space and clarity for your work. Loaded with features to improve productivity and sustainability.

Designed for sustainability

- PowerSensor saves up to 80% energy costs
- LightSensor for the perfect brightness with minimal power

Excellent performance

- UltraClear 4K UHD (3840 x 2160) resolution for precision
- VA display delivers awesome images with wide viewing angles
- SmartImage pre-sets for easy optimised image settings

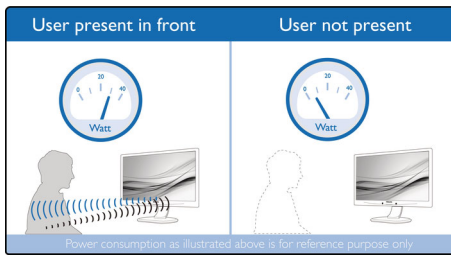
Designed for the way you work

- Less eye fatigue with Flicker-Free technology
- LowBlue Mode for easy-on-the-eyes productivity
- EasyRead mode for a paper-like reading experience
- SmartErgoBase enables user-friendly ergonomic adjustments
- Built-in stereo speakers for multimedia

PHILIPS

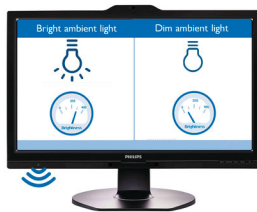
Highlights

PowerSensor



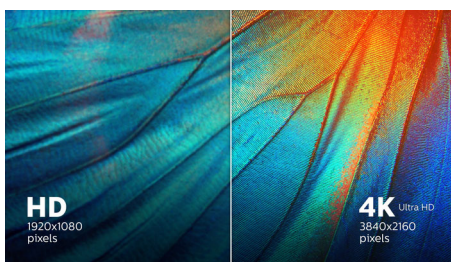
PowerSensor is a built-in 'people sensor' that transmits and receives harmless infrared signals to determine if the user is present and then automatically reduces monitor brightness when the user steps away from the desk, cutting energy costs by up to 80 percent and prolonging monitor life

LightSensor



LightSensor uses a smart sensor to adjust the picture brightness depending on the light conditions in the room for the perfect picture with minimal power usage.

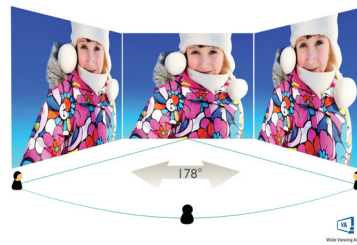
UltraClear 4K UHD Resolution



These Philips displays utilise high-performance panels to deliver UltraClear, 4K UHD (3840 x 2160) resolution images. Whether you are a demanding professional requiring extremely detailed images for CAD solutions, a user of 3D graphics applications or a financial wizard

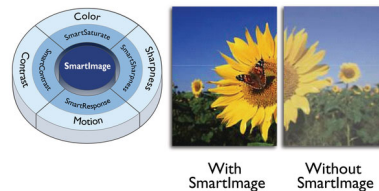
working on huge spreadsheets, Philips displays will make your images and graphics come alive.

VA display



The Philips VA LED display uses an advanced multi-domain vertical alignment technology that gives you super-high static contrast ratios for extra-vivid and bright images. While standard office applications are handled with ease, it is especially suitable for photos, web browsing, films, gaming and demanding graphical applications. Its optimised pixel management technology gives you a 178/178 degree extra-wide viewing angle, resulting in crisp images.

SmartImage



SmartImage is an exclusive leading edge Philips technology that analyses the content displayed on your screen and optimises your display performance. This user-friendly interface allows you to select various modes, like Office, Photo, Movie, Game, Economy etc., to fit the application in use. Based on the selection, SmartImage dynamically optimises the contrast, colour saturation and sharpness of images and videos for ultimate display performance. The Economy mode option offers you major power savings. All in real time at the touch of a single button!

Flicker-Free technology



Due to the way brightness is controlled on LED-backlit screens, some users experience flicker on their screen which causes eye fatigue. Philips Flicker-Free technology applies a new solution to regulate brightness and reduce flicker for more comfortable viewing.

LowBlue Mode



Studies have shown that just as ultra-violet rays can cause eye damage, shortwave-length blue light rays from LED displays can cause eye damage and affect vision over time. Developed for wellbeing, the Philips LowBlue Mode setting uses a smart software technology to reduce harmful shortwave blue light.

EasyRead mode



EasyRead mode for a paper-like reading experience



Specifications

Picture/Display

- LCD panel type: VA LCD
- Backlight type: W-LED system
- Panel Size: 31.5 inch/80 cm
- Display Screen Coating: Anti-Glare, 3H, Haze 25%
- Effective viewing area: 697.306 (H) x 392.234 (V)
- Aspect ratio: 16:9
- Optimum resolution: 3840 x 2160 @ 60 Hz
- Pixel Density: 140 PPI
- Response time (typical): 4 ms (Grey to Grey)*
- Brightness: 350 cd/m²
- Contrast ratio (typical): 3000:1
- SmartContrast: 50,000,000:1
- Pixel pitch: 0.18159 x 0.18159 mm
- Viewing angle: 178° (H)/178° (V), @ C/R > 10
- Flicker-free
- Picture enhancement: SmartImage
- Display colours: 16.7 M
- Colour gamut (typical): NTSC 98%*, sRGB 119%*, Adobe RGB 97%*
- Scanning Frequency: 30–140 kHz (H) / 23–75 Hz (V)
- SmartUniformity: TBC
- Delta E: TBC
- sRGB
- LowBlue Mode
- EasyRead
- Adaptive sync

Connectivity

- Signal Input: DisplayPort 1.2, HDMI 2.0 x 2
- HDCP: HDCP 2.2 (DP/HDMI)
- USB: USB-B x 1 (upstream), USB3.2 x 4 (downstream with 1 fast charge B.C 1.2)
- Sync Input: Separate Sync
- Audio (In/Out): Audio out

Convenience

- Built-in Speakers: 3 W x 2
- User convenience: SmartImage, Input, PowerSensor, Menu, Power On/Off
- Control software: SmartControl
- OSD Languages: Brazil Portuguese, Czech, Dutch, English, Finnish, French, German, Greek, Hungarian, Italian, Japanese, Korean, Polish, Portuguese, Russian, Simplified Chinese, Spanish, Swedish, Traditional Chinese, Turkish, Ukrainian
- Other convenience: Kensington lock, VESA mount (100 x 100 mm)
- Plug and Play Compatibility: DDC/CI, Mac OS X, sRGB, Windows 10 / 8.1 / 8 / 7

Stand

- Height adjustment: 180 mm
- Pivot: +/- 90 degree

- Swivel: +/- 180 degree
- Tilt: -5~30 degree

Power

- ECO mode: 37.1 W (typ.)
- On mode: 60.3 W (typ.)
- Standby mode: 0.3 W
- Off mode: Zero watts with Zero switch
- Power LED indicator: Operation - White, Standby mode - White (flashing)
- Power supply: Built-in, 100–240 VAC, 50–60 Hz

Dimensions

- Product with stand (max height): 714 x 649 x 280 mm
- Product without stand (mm): 714 x 422 x 62 mm
- Packaging in mm (W x H x D): 930 x 563 x 186 mm

Weight

- Product with stand (kg): 11.55 kg
- Product without stand (kg): 7.54 kg
- Product with packaging (kg): 14.76 kg

Operating conditions

- Temperature range (operation): 0°C to 40°C °C
- Temperature range (storage): -20°C to 60°C °C
- Relative humidity: 20%-80 %
- Altitude: Operation: +12,000 ft (3658 m), Non-operation: +40,000 ft (12,192 m)
- MTBF (demonstrated): 70,000 hrs (excluded backlight)

Sustainability

- Environmental and energy: PowerSensor, LightSensor, RoHS
- Recyclable packaging material: 100 %
- Post-consumer recycled plastic: 85%
- Specific Substances: PVC/BFR free housing, Mercury free, Lead free

Compliance and standards

- Regulatory Approvals: CB, TUV/GS, TUV Ergo, SEMKO, CU-EAC, EAEU RoHS, CCC, CECP, CEL, CE Mark, FCC Class B, ICES-003, UKRAINIAN

Cabinet

- Front bezel: Black
- Rear cover: Black
- Foot: Black
- Finish: Texture

What's in the box?

- Monitor with stand
- Cables: HDMI cable, DP cable, Power cable
- User Documentation



Issue date 2020-09-11

Version: 1.0.1

12 NC: 8670 001 67987
EAN: 87 12581 76807 2

© 2020 Koninklijke Philips N.V.
All Rights reserved.

Specifications are subject to change without notice.
Trademarks are the property of Koninklijke Philips N.V.
or their respective owners.

www.philips.com

* Response time value equal to SmartResponse
* NTSC Area based on CIE 1976
* sRGB Area based on CIE 1931
* Adobe RGB Coverage based on CIE 1976
* The monitor may look different from feature images.